



# Ordering Procedure

Y-20.5-OP

02-24-11

## FlowBar Linear Custom Curving

Date: \_\_\_\_\_  
Company: \_\_\_\_\_  
Salesperson: \_\_\_\_\_  
Job Name: \_\_\_\_\_  
Customer PO#: \_\_\_\_\_  
SDA#: \_\_\_\_\_

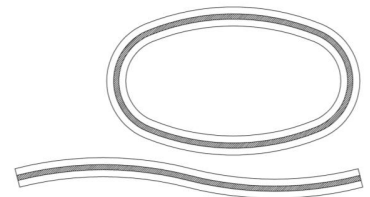
FlowBar Linear Line #: \_\_\_\_\_

FlowBar Plenum Line#: \_\_\_\_\_

Tag: \_\_\_\_\_

Quantity: \_\_\_\_\_

## FlowBar Linear Basic Data



### PART I

#### SECTION 1 -- What is the Model?

Model	Slot Width	Slot Type
FL-10	1.0"	1-Slot
FL-15	1.5"	2 CRA
FL-20	2.0"	2 CRB
FL-25	2.5"	2 CRN
FL-30	3.0"	

#### SECTION 2 -- Where is the Diffuser Mounted?

- .. Flat Ceiling or Flat Arched Side Wall
- .. Concave Side Wall or Arched Ceiling  
(Curved with face towards center)
- .. Convex Side Wall  
(Curved with face away from center)

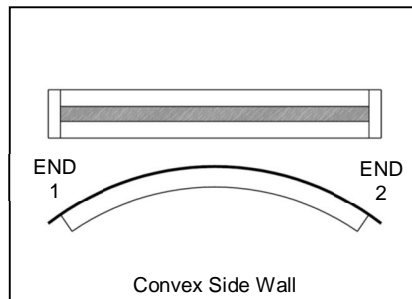
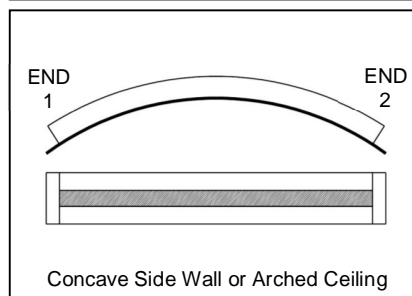
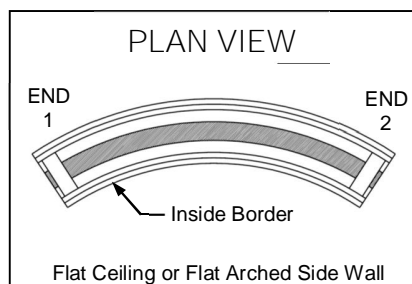
#### SECTION 3 -- What is the Border Type?

3A. Inside of ceiling mount or bottom side of wall mount	3B. Outside of ceiling mount or top side of wall mount.
.. 1	.. 1
.. 2	.. 2
.. 3	.. 3
.. 4	.. 4
.. 5	.. 5
.. 6	.. 6
.. 7*	.. 7*

\* Border 7 is the same extrusion as Border 6.  
Border 7 includes hardware for concealed  
fastening.

#### SECTION 4 -- What is the End Type?

End 1 Type	End 2 Type
.. X – End Border	.. X – End Border
.. Y – Open End	.. Y – Open End
.. Z – End Cap	.. Z – End Cap



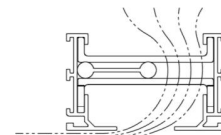
#### SECTION 5 -- Pattern Controllers

.. High Throw

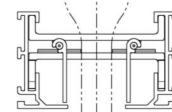
.. Jet Throw

Note:

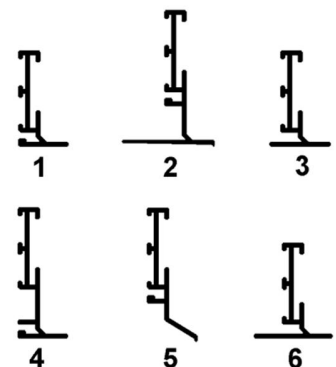
1. Jet Throw pattern controllers  
may not be adjustable.
2. High Throw pattern controller  
will be oriented toward center of  
radius and as radius becomes  
smaller pattern controllers  
become less adjustable.



HIGH THROW



JET THROW



# FlowBar Linear Curving Data

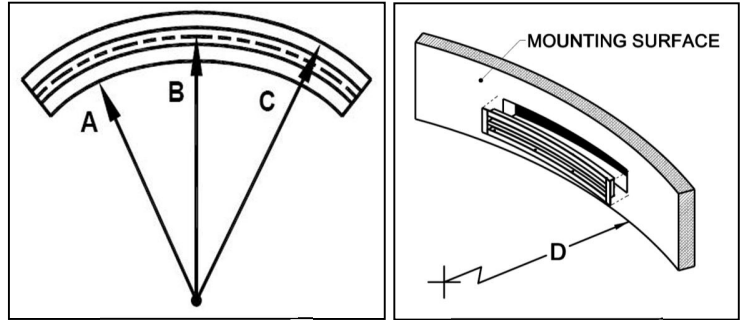
## PART II

Drawing must be attached. (See page 5 for drawing area)

### SECTION 1

Where is the radius measured?

- .. A. Inside edge of Inside Border
- .. B. Centerline of Unit
- .. C. Outside edge of Outside Border
- .. D. Mounting Surface (Sidewall / Arched Ceiling)



Flat Ceiling

Side Wall

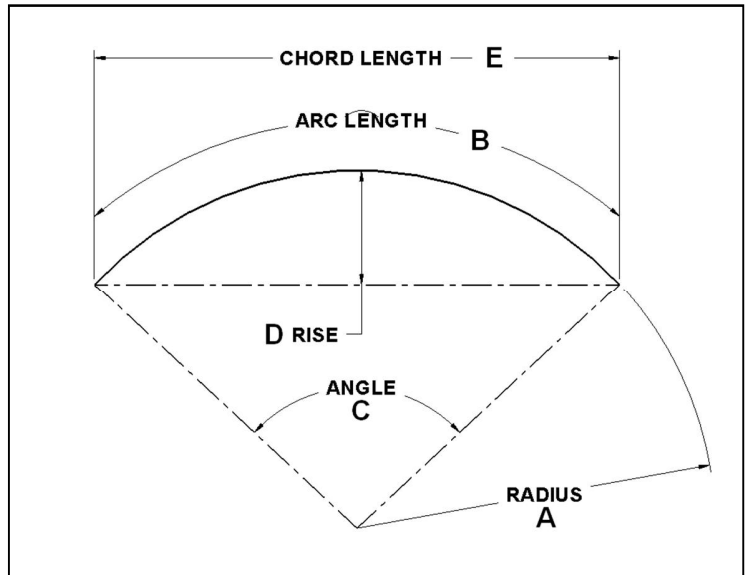
### SECTION 2

Specify the Curve

Note: All dimensions represent slot length in FlowBar and do not include end caps or end-borders.

Specify any two of the following:

- .. A. Radius = \_\_\_\_\_ inches  
Min Radius Border = 24"
- .. B. Arc Length = \_\_\_\_\_ inches  
(Arc length along radius selected in Section 1)
- .. C. Angle = \_\_\_\_\_ degrees  
(Length to be determined by Titus)
- .. D. Rise = \_\_\_\_\_ inches  
(Length to be determined by Titus)
- .. E. Chord Length = \_\_\_\_\_ inches  
(Length to be determined by Titus)



### NOTES:

1. Each radius with different dimensions requires a unique line item and corresponding custom curving order form.
2. Maximum curved radius sections will be approximately 120 inches long. Anything longer than 120 inches may be in multiple sections.
3. Titus will determine section lengths. If you have special lengths, enter as separate line items.
4. All Titus fabrication drawings for curved units will be submitted for customer approval prior to release for fabrication.
5. All information must be filled out before drawings will be created.
6. Drawings must be approved by representative prior to release to production.
7. Special consideration must be made when butting two curved diffusers together with different radii. The slots and extrusions may not be perfectly aligned.

# FlowBar Plenums

## Part III

### SECTION 1

What type of Plenum do you require?

- ☐ A. Curved Plenum  
This plenum is curved to the radius of the FlowBar linear unit. 1/2 inch minimum clearance is required.  
**Advise inlet orientation.**

- ☐ C. Side Wall

- ☐ D. None

**Note:** Plenums can not cross two different radius.

### SECTION 2

Specify quantity of plenums on the standard order form.

